



Accessories  
25/26

**FALL**

**WINTER**





Rooted in tradition and shaped by the soul of the city, nordbron's story begins in Istanbul. Passed down through generations, the founding family's dedication to quality laid the groundwork for what would become the brand's identity. From its humble origins as a small hat shop in 1978, nordbron evolved into a name synonymous with superior craftsmanship and design-focused innovation. This rich heritage continues to resonate in every product, each a testament to the brand's commitment to excellence and attention to detail.



**Heritage.**  
**Culture.**  
**Timelessness.**

Inspired by Istanbul's cultural richness, nordbron creates modern, original designs that bridge cultures. By reinterpreting traditional textures for urban and outdoor lifestyles, the brand infuses timeless versatility into its creations. nordbron's designs not only embody aesthetics but also carry deeper meaning, forging connections through thoughtful craftsmanship. Each piece stands as a contemporary expression of culture, uniting the past and present to build lasting ties across the world.









## MATERIALS

Acrylic  
Angora  
Cotton  
Lambswool  
Polyamide  
Viscose  
Wool

## HAT SIZE

One Size Fits All  
Size M : 58 cm  
Size L : 60 cm

## TECH INFORMATION



### OEKO-TEX® STANDARD 100

This certification confirms that textile products are free from harmful substances. Products are tested to meet health and environmental standards. The use of recycled materials and organic cotton is also verified during this process. The certification ensures safe and sustainable production.

## FIT GUIDE



### Slim Fit

Fits close to the top for easy covering, hugs the head but is never restrictive.



### Regular Fit

Second hair feeling for before, during and after wearing, covers the head for post cold-filled days comfort.



### Relaxed Fit

A little looser than regular, while remaining fairly form - relax fitting in mind.



### Loose Fit

A modern take on the traditional hat, provides slightly covering around the head and through to top.

## ICONS GUIDE



Packaging Unit



Handcrafting



Water-repellent



Made in Türkiye



Half Lining



Full Lining



Contains  
Recycled Materials



Thanks to special characteristics of its yarn the item would become a different color than the order.





# ALL TIME ICON

---

All Time Icon collection embodies nordbron's vision of timeless design, offering pieces that transcend seasons and become brand signatures. This curated selection combines minimalist details with a modern, functional aesthetic. Designed for versatility, each piece seamlessly blends comfort and style, adapting effortlessly to every occasion.





1189

JENSON

Jenson beanie provides extra warmth with its double-fold band. It's non-polar design offers lightness, while woven label adds a natural touch. The raglan structure and regular fit ensure a comfortable wear. Perfect for daily use, whether in the city or outdoors.

DETAILS

53% Polyester 47% Viscose  
Woven label  
Regular Fit / One Size



1103

PUMB

The flat knit Pumb beanie was designed with fit versatility in mind. Hand stitched folded vegan label detail is exposed when worn with a broad cuff as a slim fit, or unrolled for a slouched look.

DETAILS

100% Acrylic  
Multiple ways to wear  
Hand stitched folded vegan label  
Slim Fit / One Size



C001 Black      C003 Dark Gray      C004 Gray      C032 Brick Red



C001 Black      C003 Dark Gray      C017 Brown      C019 Camel



C051 Army      C053 Light Gray      C061 Sulphur      C086 Atlantic Green



C048 Navy      C061 Sulphur      C149 Blush



2105  
**POSIE**

Perfect for snow-drenched excursions, a selection of natural-toned and lightweight headwear stylish look completes this unique Posie offering. The relaxed fit body structure is detailed with a nordbron hand stitched folded leather label.

**DETAILS**

50% Acrylic 43% Nylon 7% Wool  
Hand stitched folded leather label  
Relaxed Fit / One Size



4037  
**GLENY**

A relaxed fit for street-oriented people, just the right weight with its wool blended yarn and plain structure. Gleny is a progressive whole-day beanie which is crafted with a one-color and resilient plain-soft knit pattern, detailed with nordbron hand stitched folded leather label.

**DETAILS**

62% Acrylic 28% Nylon 8% Wool 2% Spandex  
Hand stitched folded leather label  
Relaxed Fit / One Size



C001 Black      C053 Light Gray      C123 Mint



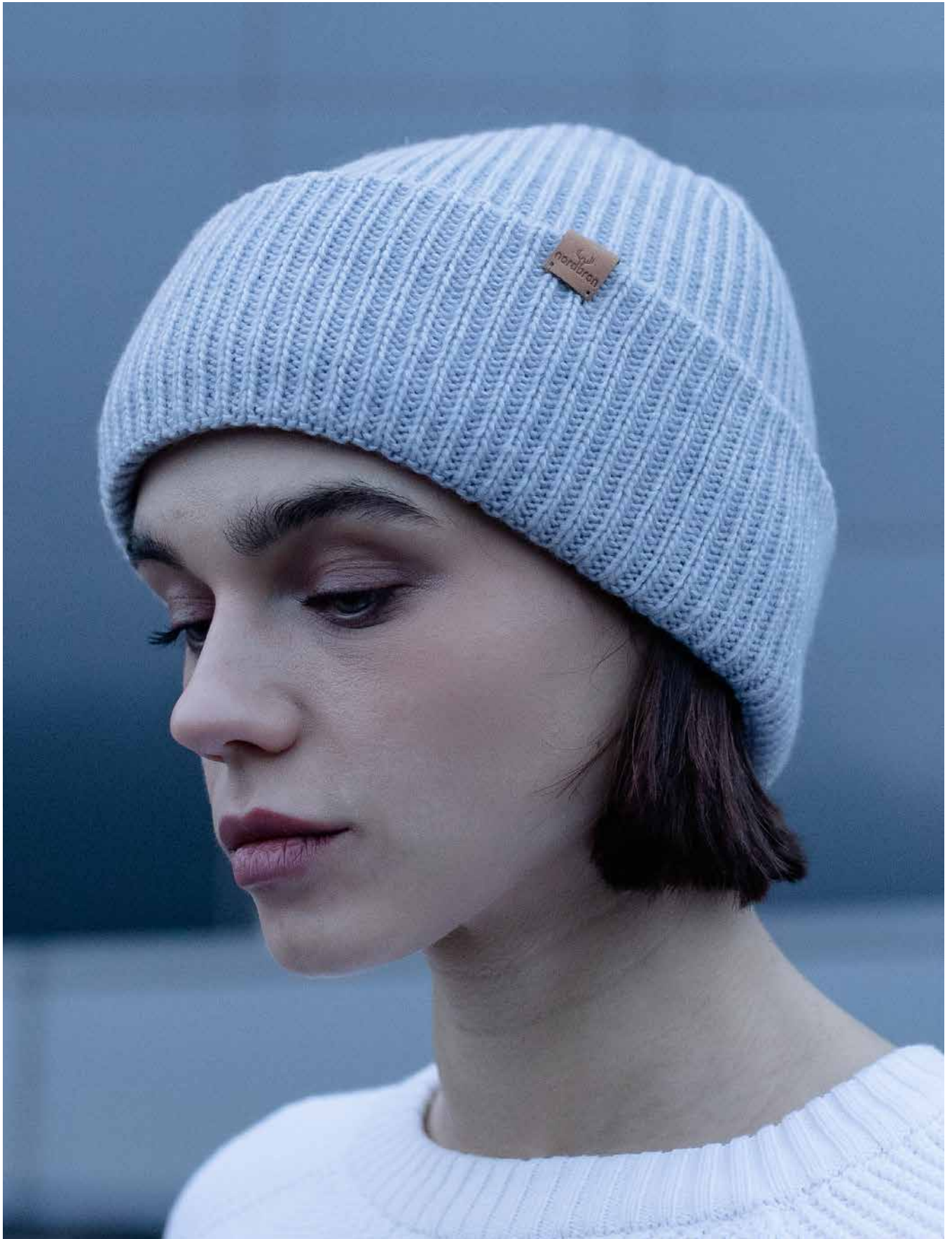
C001 Black      C004 Gray      C033 Pink      C036 Red



C148 Salmon      C166 Smoke Orchid



C061 Sulphur      C082 Coffee      C144 Chili









2106  
**JEBBA**

Inspiring Jebba, among the design-driven finishes with durable riched merino wool and fine acrylic blend knitted utility pattern, a custom relaxed fit and nordbron hand-stitched folded leather label branding.

DETAILS

- 50% Merino Wool 50% Anti-Pilling Acrylic
- Multiple ways to wear
- Hand stitched folded leather label
- Relaxed Fit / One Size



1114  
**CUAT**

Cuat beanie adds comfort to your style with its modern lines. It's double-fold band and slim fit ensure a perfect fit, while woven label offers a natural touch of elegance. The cotton blend provides a soft feel. With a non-polar, raglan cut design, it delivers lightweight comfort for everyday wear.

DETAILS

- 50% Cotton 50% Acrylic
- Woven label
- Slim Fit / One Size



C001 Black  
C004 Gray



C001 Black  
C002 Anthracite  
C006 Cream  
C037 Dried Rose



C048 Navy  
C082 Coffee



C048 Navy  
C091 Blue Stone  
C118 Stone



4200

MALI

Joining the soft color-inspired style of the Mali silhouette is crafted as a lifestyle headwear with a qualified refined yarn. Detailed with a clean nordbron woven label and rib knitted pattern folded end on regular fit body structure.

DETAILS

100% Acrylic  
Woven label  
Regular Fit / One Size



4226

SAXA

The Saxa beanie stands out with its minimalist design and lightweight feel. Its knit lining provides a soft touch, while the bandless design ensures easy wear. The hand stitched vegan label adds an eco-friendly detail to the look. With its raglan cut and regular fit, it comfortably adapts to any head shape.

DETAILS

53% Polyester 47% Viscose  
Lining 53% Polyester 47% Viscose  
Hand stitched vegan label  
Regular Fit / One Size



C006 Cream  
C019 Camel  
C042 Violet  
C044 Placid Blue  
C142 Orange



C001 Black  
C004 Gray  
C029 Coral  
C081 Umbra Gray  
C123 Mint



1204

ZUNHI

The Zunhi scarf offers warmth with its unique design and wool blend. Its polyamide texture adds extra flexibility and durability. This scarf stands out with its modern lines and adapts to any style. Detailed with folded silicone label.

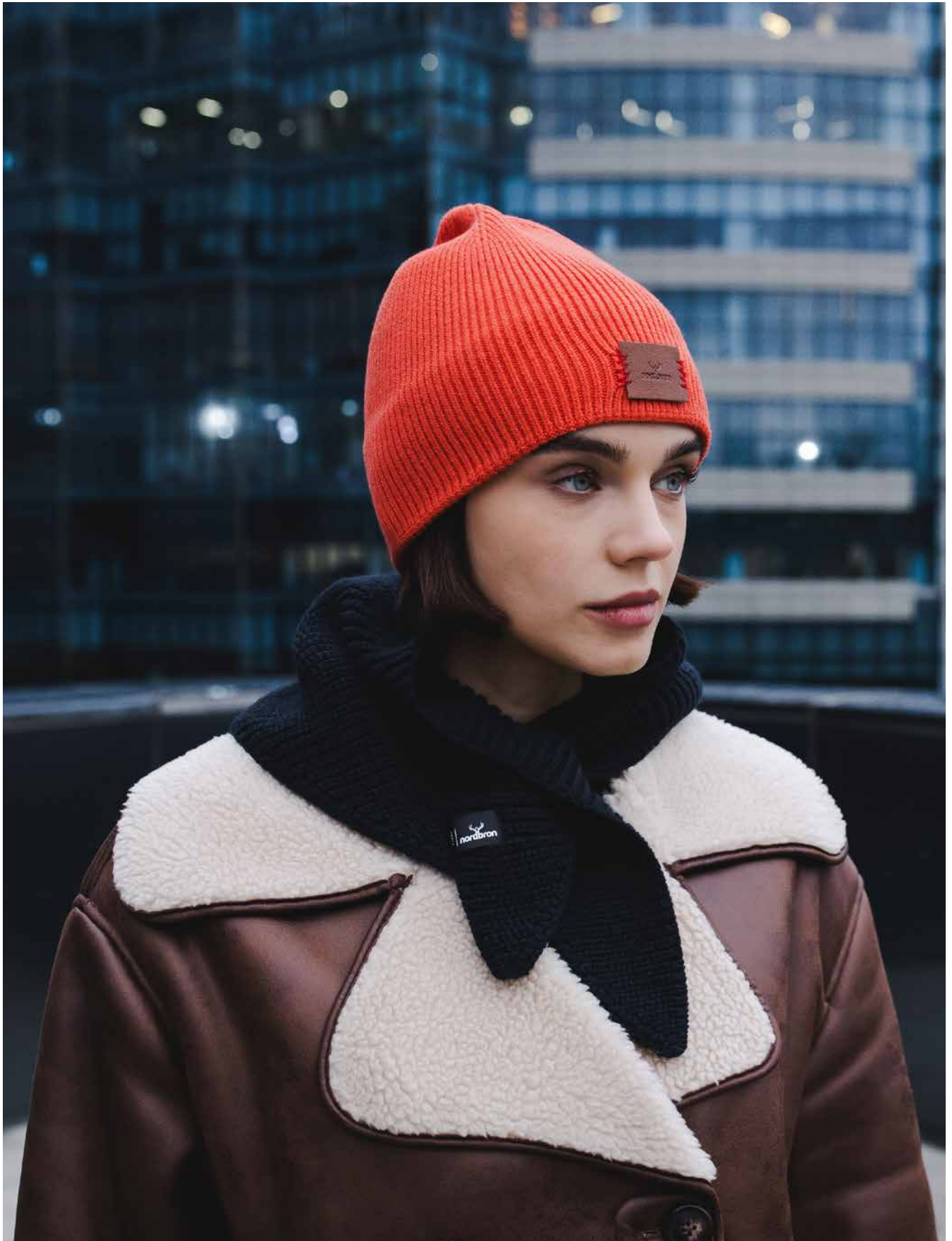
DETAILS

70% Acrylic 15% Wool 15% Polyamide  
Folded silicone label  
One Size



C004 Gray  
C048 Navy  
C056 Golden Brown  
C142 Orange











4241

**MOENA**

Moena is available in a selection of the best tactile clothing color combinations for fall, with a comfortable feel and a soft touch. It is water-repellent fabric. It is detailed with the nordbron hand stitched folded vegan label.

**DETAILS**

100% Polyester  
Lining: 100% Cotton  
Water-repellent fabric  
Hand stitched folded vegan label  
One Size



4242

**BELLUNO**

The velvet rendition of the Belluno features a relaxed, comfortable feel, while the one-color pattern provides a cozy and stylish look. It is detailed with the nordbron hand stitched folded vegan label.

**DETAILS**

100% Cotton  
Lining: 100% Cotton  
Hand stitched folded vegan label  
One Size

C017  
BrownC032  
Brick RedC051  
ArmyC055  
OchreC032  
Brick RedC055  
OchreC078  
TaupeC149  
BlushC176  
Light Brown

4243

**VEISEU**

Exuding warmth, the soft touch exterior of Viseu, while old world opulence and contemporary refinement intersect for the velvet offering of sized-down style with unique thinner fabric pattern. It is detailed with the nordbron hand stitched folded vegan label.

**DETAILS**

100% Cotton  
Lining: 100% Cotton  
Hand stitched folded vegan label  
One Size

C055  
OchreC149  
BlushC176  
Light Brown



5501

MICROFLEECE UNI

Great for layering under a helmet or wearing on its own, this comfy baselayer-inspired cap is both warm and wicking. Featuring a stretchy, smooth-face fleece fabric. Stretch stitching delivers amazing comfort and fit. It is detailed with the silicone label.

DETAILS

100% Polyester  
Silicone label  
Slim Fit / One Size



C004  
Gray

C048  
Navy

C069  
Fuchsia





# WOMAN

---

Nordbron Woman collection redefines timeless elegance by harmonizing modern urban living with the warmth and practicality of cold-weather essentials. Blending vintage charm with contemporary sophistication, each piece is meticulously designed for women who value both grace and comfort. With every detail thoughtfully curated, the collection embodies a creative interplay of style and functionality, elevating and celebrating individual expression.





1199

**BAXLE**

Blending softness with a touch of cashmere, the Baxle beanie stands out with its simple and elegant lines. The single-fold cuff and raglan design offer a modern style, while the hand stitched vegan label adds a distinctive touch.

**DETAILS**



35% Cotton 35% Viscose 25% Polyamide 5% Cashmere  
Hand stitched vegan label  
slim Fit / One Size



3213

**VIOLA**

The progressive Viola beanie is rendered in an ultra-lightweight and resilient one colorway cashmere blended yarn. Nordbron hand stitched folded leather label branding is applied, creating a stylish and cozy look with in a regular fit.

**DETAILS**



100% Wool  
Hand stitched folded leather label  
Regular Fit / One Size



C003  
Dark Gray

C018  
Beige



C001  
Black

C018  
Beige



C036  
Red

C056  
Golden Brown



C036  
Red

C055  
Ochre







1622

**RONJA**

Inspiring Ronja, among the design-driven finishes with durable rich cashmere and wool blend knitted utility pattern, a custom loose fit and nordbron hand stitched folded leather label branding.

**DETAILS**

53% Nylon 47% Lambswool  
Hand stitched folded leather label  
Loose Fit / One Size



C001  
Black

C049  
Indigo

C071  
Sand



1206

**AALEY**

Aaley Beanie features long earflaps and a knit texture, offering warmth and style in cold weather. Its soft structure provides comfort, while the silicone label adds a modern touch.

**DETAILS**

35% Cotton 35% Viscose  
25% Polyamide 5% Cashmere  
Silicone label  
Regular Fit / One Size



C003  
Dark Gray

C018  
Beige

C036  
Red

C056  
Golden Brown



1213

**CALASI SCARF**

Calasi Scarf is a stylish accessory that can be worn draped over the shoulder, featuring a modern design that catches the eye. It's front-tying structure allows for versatile styling options. Enhanced with a nordbron folded silicone label, this scarf adds an elegant touch to any outfit.

**DETAILS**

100% Acrylic  
Folded silicone label  
Size 90x38 cm



C001  
Black

C048  
Navy





1636

RAINE

Designed with stylish one color body structure, detailed with nordbron hand stitched folded leather label. Raine is crafted with slightly loose stitch within relaxed fit for the highest comfort.

DETAILS



70% Acrylic 27% Nylon 3% Spandex  
Hand stitched folded leather label  
Relaxed Fit / One Size



C003 Dark Gray    C004 Gray    C033 Pink    C078 Taupe



C082 Coffee    C135 Mauve    C165 Marlin



1637

RAINE SCARF

Raine scarf is inspired by the endless possibilities that cold weather brings. Crafted with a soft texture, it features a warm design complemented by a nordbron hand stitched folded leather label, adding a cozy touch. This versatile scarf enhances any outfit while providing comfort and style, making it a perfect addition to your winter wardrobe.

DETAILS



70% Acrylic 27% Nylon 3% Spandex  
Hand stitched folded leather label  
Size 180x30 cm



C003 Dark Gray    C004 Gray    C033 Pink    C078 Taupe



C082 Coffee    C135 Mauve    C165 Marlin









1210

## RUQY

Ruqy beanie stands out with its modern knitted texture and folded cuff detail. The hand stitched vegan label with zigzag adds an eco-friendly, stylish touch, while the woven design label on the back gives it a unique character. It is a stylish accessory that elevates your look with its vibrant colour options.

### DETAILS

53% Polyester 47% Viscose  
Hand stitched vegan label (front)  
hand stitched woven label (back)  
Regular Fit / One Size



C007  
White

C029  
Coral

C033  
Pink



C048  
Navy

C123  
Mint



1112

## PERF

Perf beanie, with its stylish folded cuff and soft fleece lining, is the perfect choice for cold weather. The hand stitched metal label is one of the standout details of the design.

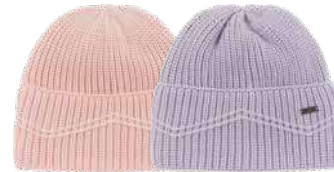
### DETAILS

100% Acrylic  
Fleece Lining: 100% Polyester  
Hand stitched metal label  
Regular Fit / One Size



C019  
Camel

C044  
Placid Blue



C154  
Pink Rose

C161  
Orchid





1207

COOPLEY

Coopley beanie offers a soft texture and eye-catching colors, perfect for cold winter days. It's knit pattern combines classic style with modern details, while the comfortable fit ensures ease of wear. Hand stitched folded vegan label highlights sustainability and adds a natural touch.

DETAILS

100% Acrylic  
Fleece Lining: 100% Polyester  
Hand stitched folded vegan label  
Regular Fit / One Size



3201

MILEY

Miley beanie is crafted with soft blend acrylic yarn, offering a lightweight, comfortable fit with a vintage-inspired design. It features a classic leather label and exudes the timeless appeal of historical 3D geometric knit patterns, creating both a stylish and cozy look. Perfect for everyday wear with its relaxed fit.

DETAILS

72% Acrylic 25% Nylon 3% Elastane  
Classic leather Label  
Relaxed Fit / One Size



C001 Black      C061 Sulphur      C071 Sand



C004 Gray      C038 Beet Red



C123 Mint      C152 Sorbet



C128 Denim      C149 Blush









3218

## FELONY

Joining the soft color-inspired style of Felony silhouette is crafted as a lifestyle headwear. Detailed with nordbron hand stitched folded leather label and opposite contrasted strip knitted pattern folded end on relaxed fit body structure.

### DETAILS

54% Acrylic 36% Nylon 6% Wool 4% Spandex  
Hand stitched folded leather label  
Relaxed Fit / One Size



C004  
Gray

C080  
Marshmallow

C150  
Dusty Pink



3210

## WAINY

As bold herringbone inspired, timeless as a favorite cosy way of headwear, the cosy Wainy slim fit crafted beanie features softly structured knit pattern and a nordbron hand stitched folded leather label for a stylish look.

### DETAILS

43% Nylon 26% Acrylic 13% Mohair  
13% Wool 5% Spandex  
Hand stitched folded leather label  
Slim Fit / One Size



C004  
Gray

C019  
Camel



C039  
Lilac

C066  
Soft Peach





1217

**LINJE**

Linje beanie stands out with its distinctive striped design. The satin label highlights its quality and craftsmanship. With various color options, this piece adds a striking touch to your style on cold days.

**DETAILS**

70% Acrylic 27% Nylon 3% Spandex  
Satin label  
Relaxed Fit / One Size



C001  
Black

C017  
Brown

C033  
Pink



C051  
Army

C070  
Purple



3165

**CLARISSA**

Exuding warmth, the soft touch exterior of Clarissa beanie, while old world opulence and contemporary refinement intersect for the crocodile shell offering of sized-down style with unique thicker yarn pattern.

**DETAILS**

72% Acrylic 25% Nylon 3% Elastane  
Fleece Lining: 100% Polyester  
Hand stitched folded vegan label  
Relaxed Fit / One Size



C004  
Gray

C038  
Beet Red

C128  
Denim









1200

**PACOT**

Pacot beanie stands out with its contrast-colored band detail and raglan design. The color change in the band adds a dynamic touch to the model, while the vegan label provides a sustainable element.

**DETAILS**

53% Polyester 47% Viscose  
Fleece Lining: 100% Polyester  
Vegan label  
Regular Fit / One Size



C001  
Black

C029  
Coral

C061  
Sulphur

C086  
Atlantic Green



1119

**RHINE**

Rhine beanie stands out with its bold and eye-catching design, featuring asymmetrical patterns. The color blocks and dynamic knit structure bring an energetic vibe to your winter style. With a folded cuff and silicone label, it offers both style and comfort.

**DETAILS**

53% Polyester 47% Viscose  
Fleece Lining: 100% Polyester  
Silicone label  
Regular Fit / One Size



C001  
Black

C029  
Coral

C061  
Sulphur

C086  
Atlantic Green



1208

**ETHNER**

Ethner beanie stands out with its vibrant color transitions and dynamic lines. The soft pom-pom and folded cuff add comfort while giving the design a charming touch. Its practical design makes it perfect for everyday use, bringing a playful vibe to your winter style.

**DETAILS**

100% Acrylic  
Fleece Lining: 100% Polyester  
Woven label and hand stitched vegan label  
Relaxed Fit / One Size



C017  
Brown

C033  
Pink

C048  
Navy





1533

CHERLY

Cherly, a super cozy chunky knit handcrafted with comfortable rib knit special yarn which is space-dyed for a unique look. Relaxed fit structured and nordbron hand stitched wooden label branding applied.

DETAILS

100% Acrylic  
(space-dyed color effect)  
Fleece lining 100% Polyester  
Hand stitched wooden label  
Relaxed Fit / One Size



C034  
Raspberry

C066  
Laurel Green

C020  
Dusty Coral



C070  
Purple

C125  
Sky Blue

C145  
Autumn Leaf



1534

CHERLY SCARF

Cherly Scarf features a super cozy texture and chunky knit design, crafted from special yarn with a unique space-dye technique. It's relaxed structure pairs well with various outfits, while the nordbron wooden label adds an elegant touch.

DETAILS

100% Acrylic  
(space-dyed color effect)  
Hand stitched wooden label  
Size 190x26 cm



C034  
Raspberry

C066  
Laurel Green

C020  
Dusty Coral



C070  
Purple

C125  
Sky Blue

C145  
Autumn Leaf











3172

## GRACE

Grace, derived from the spirit of cool weather essentials. Each variant in this design offering embraces you with its evocative special merino wool blend yarn, colors, rib knit on hem, detailed nordbron classic leather label with a forward-thinking design.

### DETAILS

50% Merino Wool 50% Anti Pilling Acrylic  
Fleece Lining: 100% Polyester  
Classic leather label  
Regular Fit / One Size



C001  
Black

C048  
Navy



C052  
Burgundy

C080  
Marshmallow



1121

## NIWUL SCARF

Niwul Scarf captivates with its elegant knit design. Its soft texture offers both comfort and style, while modern lines provide a striking appearance. The hand stitched folded leather label a unique identity to this distinctive scarf.

### DETAILS

100% Acrylic  
Hand stitched folded leather label  
Size 172x30 cm



C006  
Cream

C017  
Brown



C019  
Camel

C048  
Navy



3313

**KORG**

Korg is inspired to be ideal for urban commuting and weekend retreats. Pattern details provide a stylish look and feel, with a relaxed fit. The plain knit design is complemented by a pom on top.

DETAILS

72% Acrylic 25% Nylon 3% Elastane  
Classic leather label  
Relaxed Fit / One Size



C003  
Dark Gray

C006  
Cream



C017  
Faded Rose

C117  
Pale Mint



1237

**NORGAD SCARF**

Nograd Scarf is a chic accessory made from sustainable materials, featuring a solid color and a woven label detail. With its fringed edges, it adds an elegant touch, making it a perfect complement to your everyday style.

DETAILS

50% Recycled Polyester 31% Polyester  
11% Nylon 8% Wool  
Woven label  
Size 182x38 cm



C004  
Gray

C018  
Beige

C025  
Acid Yellow

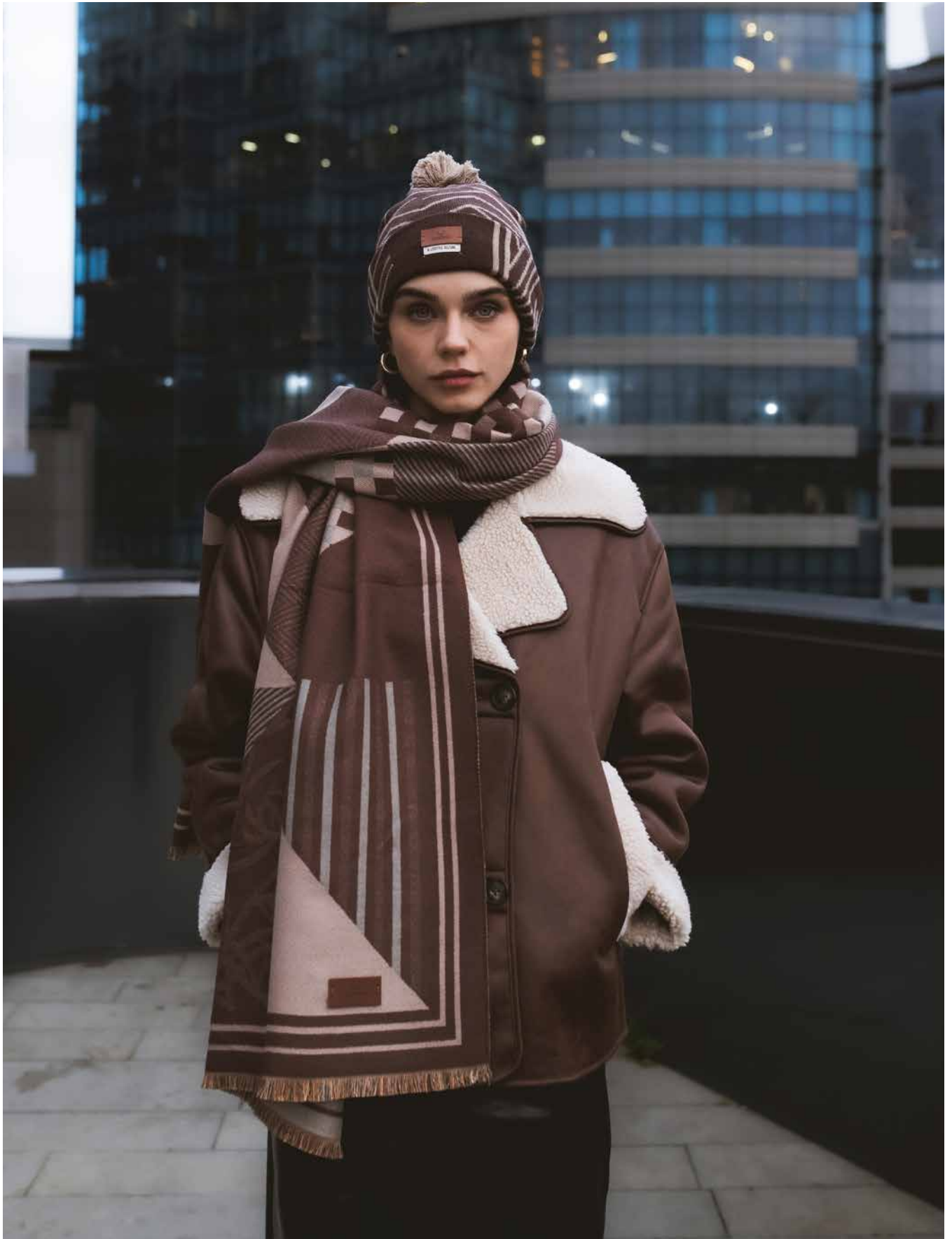


C122  
Meadow

C148  
Salmon









1216

## RIGI

Rigi Beanie offers a stylish design with modern lines, highlighting hand stitched detailing on the back. Finished with woven label and hand stitched leather label, the beanie stands out with its elegant pom-pom made from its own yarn.

### DETAILS

50% Polyester 20% Nylon 20% Acrylic 10% Wool  
Woven label and hand stitched leather label  
Regular Fit / One Size



1235

## WAYLA SCARF

Wayla scarf adds a burst of energy to your style with its eye-catching colors and patterns. The soft texture of rayon provides a lightweight feel, enhancing comfort when worn. Hand stitched vegan label adds an elegant touch to this scarf while also making it an eco-friendly choice.

### DETAILS

70% Rayon 30% Polyester  
Hand stitched vegan label  
Size 190x63 cm



C007  
White

C017  
Brown



C001  
Black

C013  
Laurel Green



C048  
Navy

085  
Green Bay



C017  
Brown

C019  
Camel



3212  
**LORENA**

Lorena is a fashion play on a wool and mohair blended yarn crafting technical way with a one piece of yarn consisting of multiple colours. Multi-knit design finished with classic leather label ending.



1212  
**CAMBRIA**

Crafted with angora for warmth, Cambria Beanie offers extra comfort with its half-fleece lining. The folded cuff and hand stitched folded vegan label add a modern and stylish touch.

**DETAILS**



51% Polyester 38% Recycled Polyester  
6% Spandex 3% Wool 3% Nylon (C173)  
97% Recycled Polyester 3% Spandex (C042,C044,C053)  
Fleece Lining: 100% Polyester  
Classic Leather label  
Regular Fit / One Size



C042 Violet      C044 Placid Blue



C053 Light Gray      C173 Black / White

**DETAILS**



50% Polyamide 30% Viscose 20% Angora  
Fleece lining 100% Polyester  
Hand stitched folded vegan label  
Regular Fit / One Size

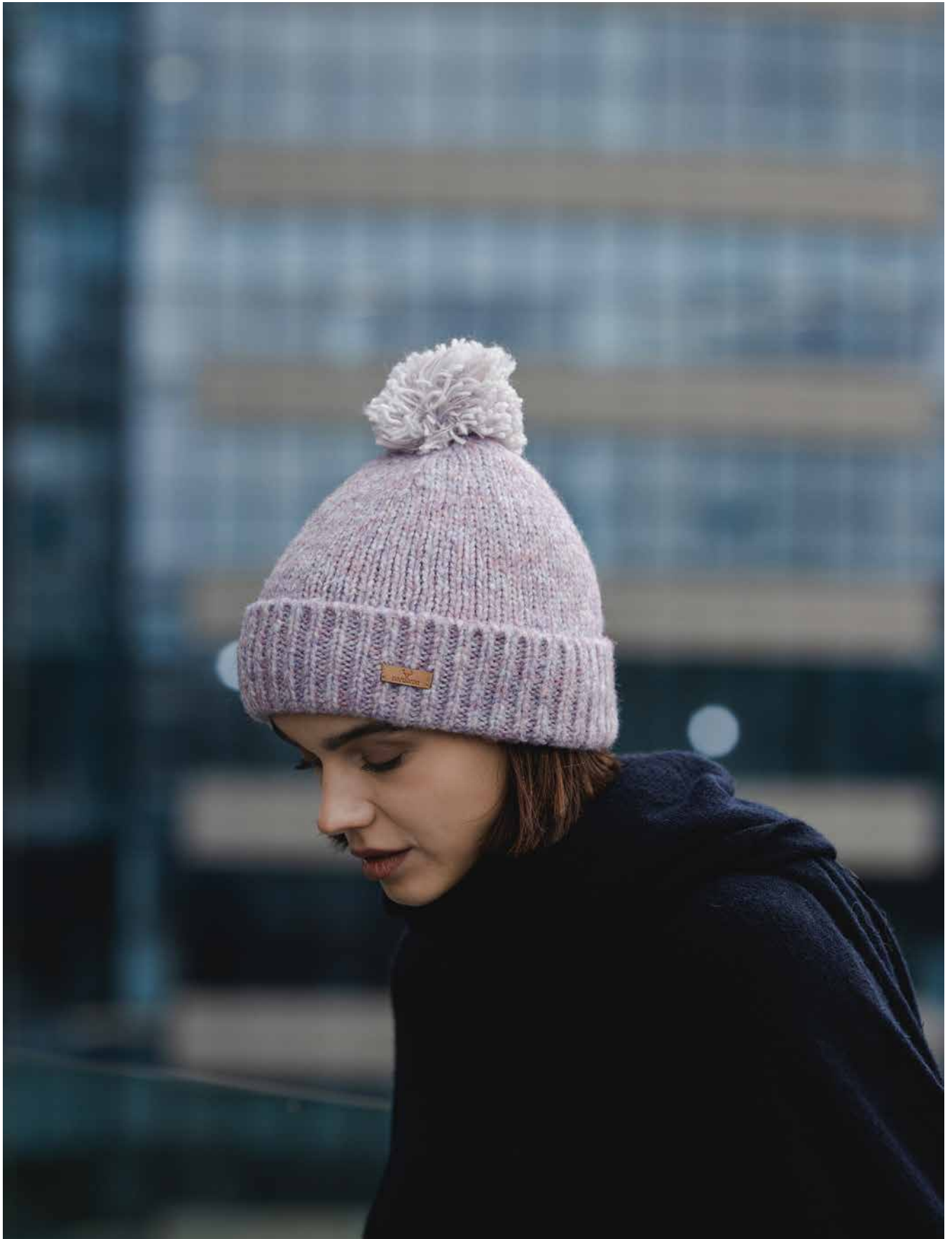


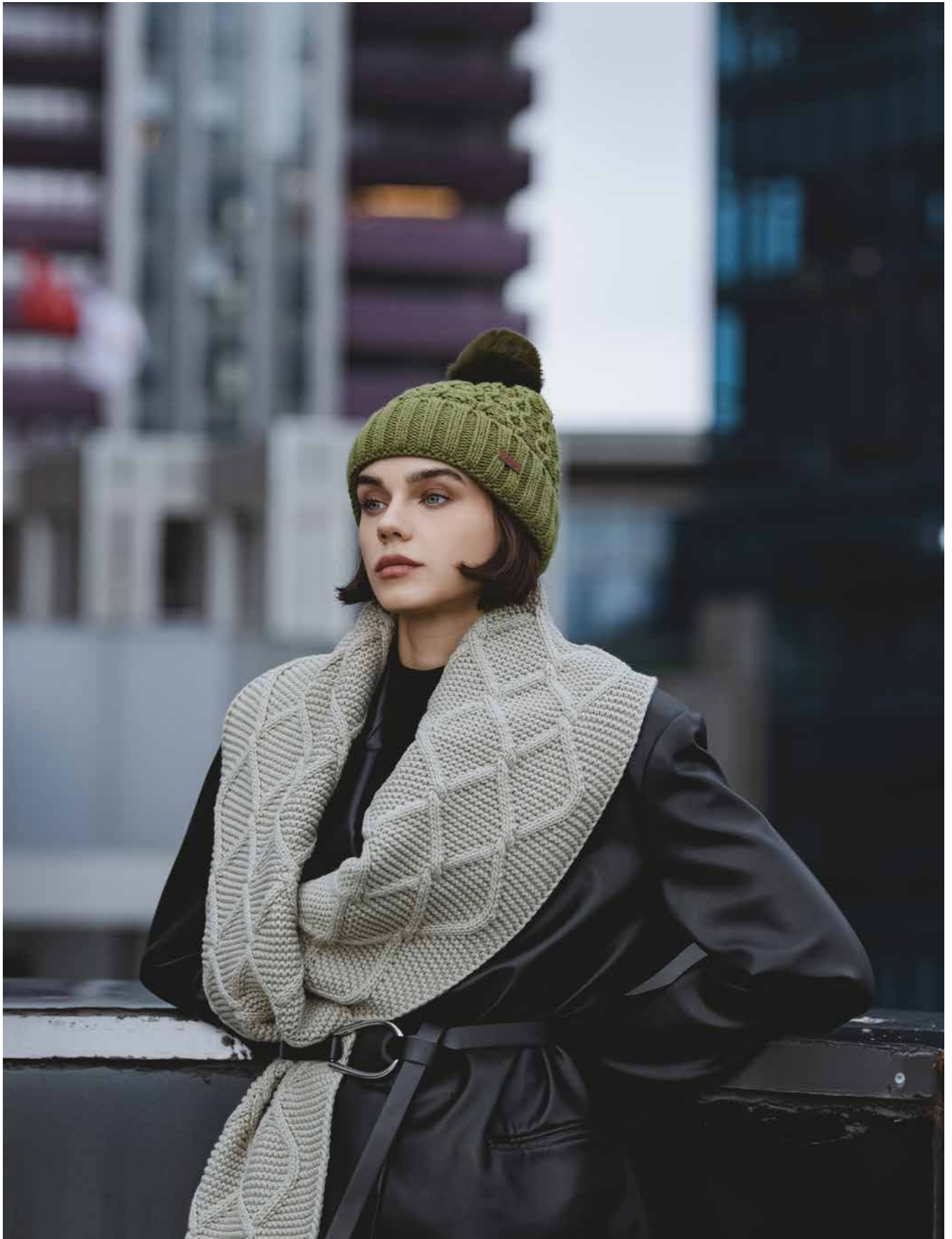
C001 Black      C018 Beige



C033 Pink      C078 Taupe









3174

**GIADA**

Rendered in a finest quality yarn treated with a soft feeling, this refined offering reflects the boundless creative spirit and stylish look with its chunky knit pattern. Folded end.

**DETAILS**

100% Acrylic (C019,C058,C001,C048)

100% Fine Acrylic (C077)

Fleece Lining: 100% Polyester

Classic vegan label (C019,C058,C001,C048)

Classic leather label (C077)

Regular Fit / One Size

C001  
BlackC019  
CamelC048  
NavyC058  
OliveC077  
Tropper

1144

**CAPRA SCARF**

Capra Scarf features a unique design highlighted by its elegant knit details. The diamond-patterned knitting adds both a stylish and modern touch to the scarf. A genuine leather label is attached, offering a natural accent to this sophisticated design.

**DETAILS**

100% Acrylic

Hand stitched folded leather label

Size 164x29 cm

C011  
SagebrushC017  
BrownC019  
CamelC117  
Dark Olive



3208

NOLLY

The unique zigzag combined pattern is applied to a tactile peached blended yarn for Nolly, and an understated nordbron logo appears on classic leather label.

DETAILS

68% Acrylic 21% Nylon 8% Wool 3% Spandex  
Fleece Lining: 100% Polyester  
Classic Leather label  
Relaxed Fit / One Size



C001  
Black

C018  
Beige



C048  
Navy

C149  
Blush



1202

SETOON SCARF

Setoon Scarf stands out with its colorful checkered design and fringe details at the ends. Made entirely from polyester, it offers practicality with its ample size. It's eye-catching patterns complement any style, while the woven label and hand stitched vegan label emphasizes the product's quality. Setoon is the perfect accessory for those seeking both comfort and style.

DETAILS

100% Polyester  
Woven label and hand stitched vegan label  
Size 210x37 cm



C019  
Camel

C029  
Coral

C043  
Ice Blue



C087  
Posy Green

C115  
Autumnal









1236

## BLOMST SCARF

Blomst Scarf features a delicate texture and floral patterns. Its reversible design offers versatile looks, adding elegance to your style. With a hand stitched vegan label, it is an eco-friendly choice.

### DETAILS

80% Rayon 20% Wool  
Hand stitched vegan label  
Size 190x70 cm



1806C084

## TONAL ANIMAL WOVEN SCARF

Tonal Animal Woven Scarf is made entirely of fine acrylic. With its double-sided texture and unique animal patterns, it complements every style. Its lightweight structure not only makes it an ideal accessory to enhance your elegance but also offers various appearance alternatives.

### DETAILS

100% Fine Acrylic  
Woven label and hand stitched leather label  
Size 192x66 cm



C002  
Anthracite

C003  
Gray



C048  
Navy

C056  
Golden Brown



1238  
**ERLE**

This bucket hat captivates with its knit design, offering a modern look for its wearers. The adjustable grosgrain detail and hand stitched folded vegan label add an elegant touch. It's the perfect accessory to elevate your style.

**DETAILS**

100% Polyester  
Hand stitched folded vegan label  
Relaxed Fit / One Size



1205  
**JUCKI**

Jucki knitted bucket hat offers warmth with its wool texture. The hand stitched vegan label has a unique touch as it is sewn with zigzag hand stitching. The bucket hat design provides both a stylish and cozy look.

**DETAILS**

80% Lambswool 20% Polyamide  
Hand stitched vegan label  
Regular Fit / One Size



C001  
Black

C002  
Anthracite



C017  
Brown

C048  
Navy



C017  
Brown

C019  
Camel



C052  
Burgundy

C143  
Rust







# MAN

---

Nordbron Man collection takes its cue from the enduring allure of the All-Time series, seamlessly blending contemporary sophistication with practical versatility. Crafted from premium materials and defined by meticulous attention to detail, the collection strikes a balance between the vibrancy of city life and the serene simplicity of nature. Each piece embodies a refined resilience, offering the modern man a perfect union of style and durability.



1169

WILMOT

Wilmot Cap is designed as a heritage piece for winter with a cosy color rendition and convenient striped design. It features a wool blend fabric, finished with a hand-stitched folded leather label. This cap blends modern comfort with a classic aesthetic, making it perfect for cold weather styling.

DETAILS



80% Polyester 20% Wool (C004, C048, C051)  
95% Polyester 5% Wool (C003)  
50% Polyester 50% Wool (C114)  
Lining: 100% Cotton  
Hand stitched folded leather label  
One Size (C004, C048, C051, C003)  
M-58 cm, L-60 cm (C114)



C003  
Dark Gray

C004  
Gray

C048  
Navy



C051  
Army

C114  
Seal Brown



0510

LEYMOND

Capturing the classic appeal of a soft, ridged velvety fabric essential, the Leymond cap features an unstructured panel crown and vintage inspired details. It is detailed with hand stitched folded leather label.

DETAILS



50% Polyester 50% Wool (C017, C019)  
95% Polyester 5% Wool (C003)  
80% Polyester 20% Wool (C158)  
100% Polyester (C048)  
Lining: 100% Polyester  
Hand stitched folded leather label  
One Size (C048, C158, C003)  
M-58 cm, L-60 cm (C017, C019)



C003  
Dark Gray

C017  
Brown

C019  
Camel

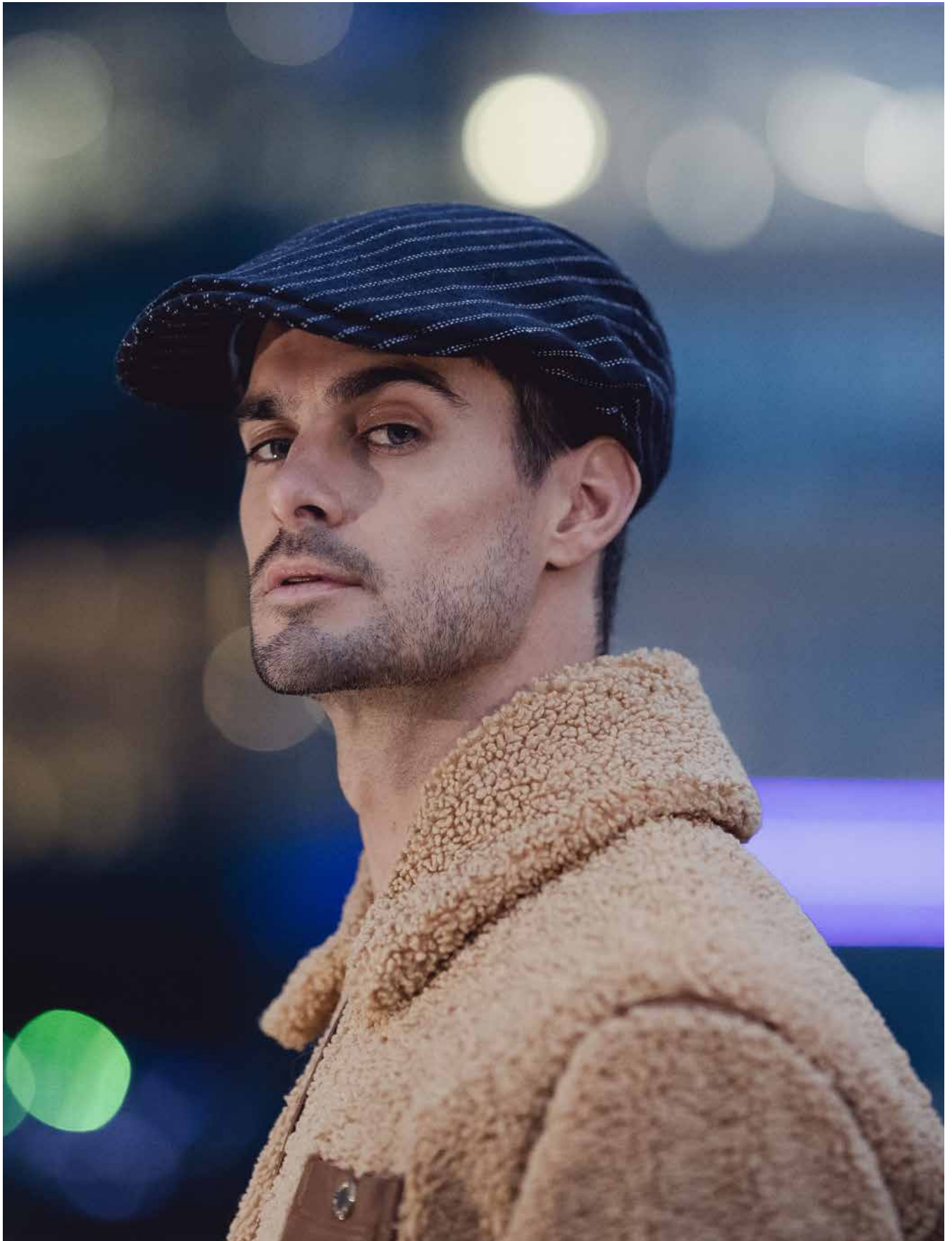


C048  
Navy

C158  
Dark Green









1220

ASKAI

Askai cap stands out with its sleek design and hidden adjustable strap. With a satin lining and hand stitched metal label, it offers both comfort and elegance.

DETAILS

75% Polyester 25% Wool  
Lining: 100% Polyester  
Hand stitched metal label  
Size M-58 cm, L-60 cm



1219

OKLOM

Oklom cap combines warmth and style with its wool blend. The hidden adjustable strap and satin lining offer a comfortable experience, while the hand stitched metal label adds a subtle touch of detail to the design.

DETAILS

70% Polyester 30% Wool  
Lining: 100% Polyester  
Hand stitched metal label  
Size M-58 cm, L-60 cm



C004  
Gray

C007  
White



C001  
Black

C017  
Brown

C048  
Navy



C019  
Camel

C048  
Navy



1225  
**NALI**

Crafted from a wool and polyester blend, Nali cap offers a refined style with its checkered fabric and satin lining. The hidden adjustable strap and hand stitched folded leather label showcase fine craftsmanship.

**DETAILS**

70% Polyester 30% Wool  
Lining: 100% Polyester  
Hand stitched folded leather label  
Size M-58 cm, L-60 cm



1227  
**QETRI**

Made from a wool and viscose blend, the Qetri cap offers comfort with its cotton lining. Finished with a genuine leather clip and adjustable leather strap at the back.

**DETAILS**

50% Wool 50% Polyester  
Lining 100% Cotton  
Hand stitched folded leather label  
One Size



C004 Gray      C017 Brown      C048 Navy



C001 Black      C017 Brown      C048 Navy









1222  
**LEXMU**

Lexmu Cap offers both style and comfort with its elastic back design. Featuring satin lining , it stands out with attention to detail. The hand stitched metal label adds a unique touch to this cap.

**DETAILS**

70% Polyester 30% Wool  
Lining: 100% Polyester  
Hand stitched metal label  
Size M-58 cm, L-60 cm



1226  
**BONDEZ**

Bondez Cap is a sophisticated hat with a classic and timeless design. With its traditional patterns and high-quality craftsmanship, it offers both style and comfort. This versatile piece complements your daily elegance and can be worn in any season.

**DETAILS**

70% Polyester 30% Wool  
Lining: 100% Polyester  
Hand stitched folded leather label  
Size M-58 cm, L-60 cm



C001 Black      C051 Army



C001 Black      C017 Brown





1165  
**GONEY**

The low profile surplus Goney cap features a herringbone twill six panel crown complemented by antique tones hardware and vintage inspired details, including a nordbron folded leather label.

**DETAILS**

95% Polyester 5% Wool  
Lining: 80% Polyester 20% Cotton  
Hand stitched folded leather label  
One Size



0418  
**CASTO**

Casto Cap is a stylish hat where classic style meets modern details. Its comfortable design and eye-catching pattern make it ideal for everyday wear. It is detailed with the nordbron hand stitched folded leather label.

**DETAILS**

50% Polyester 50% Wool  
Lining 100% Cotton  
Hand stitched folded leather label  
One Size

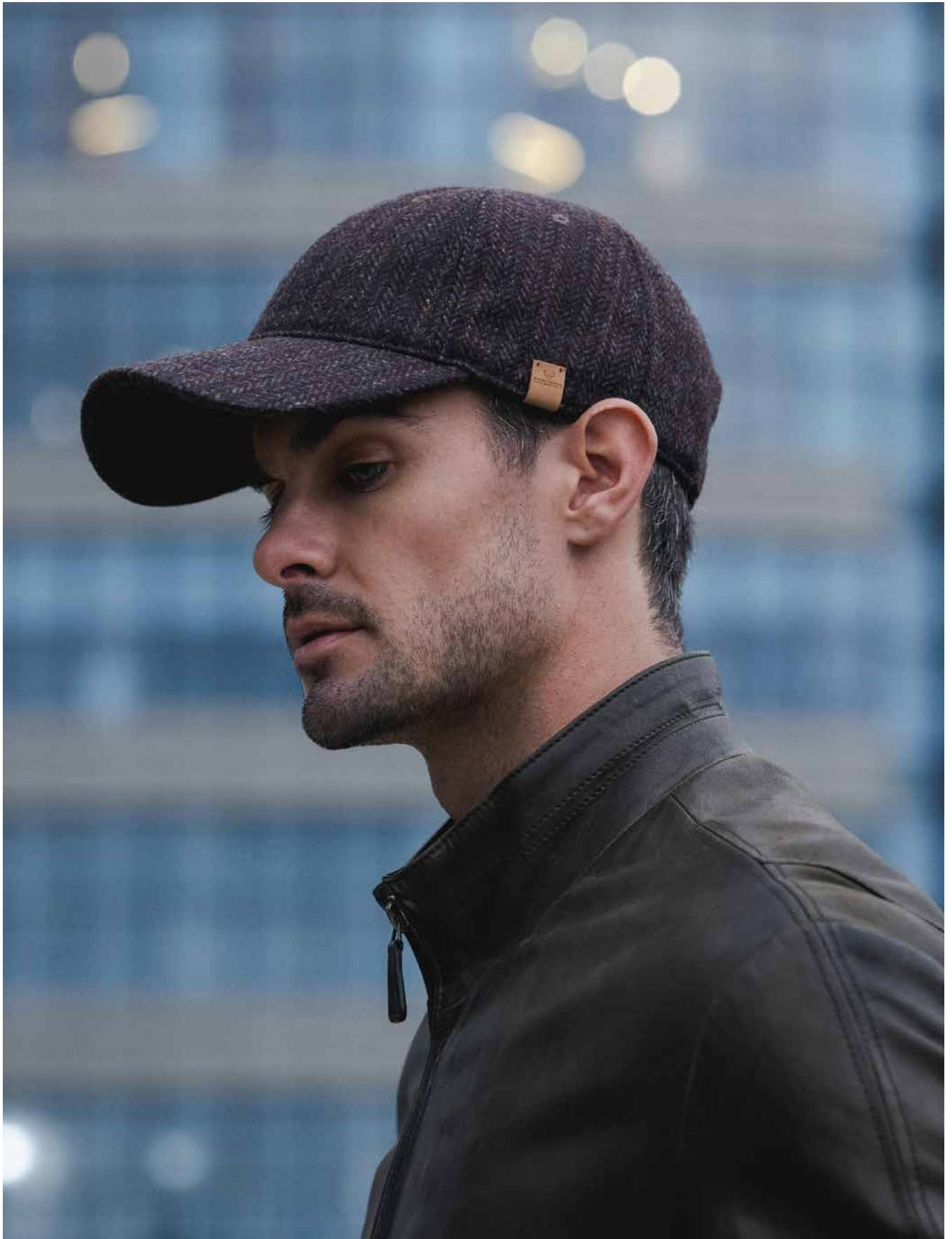


C048 Navy      C051 Army      C158 Dark Green



C048 Navy      C082 Coffee









1192  
**LOES SCARF**

Crafted from a wool-rayon blend, Loes scarf features a two-tone, double-sided design with clean edges and a central stripe. Hand stitched vegan label highlights its natural, eco-friendly touch.

**DETAILS**

80% Rayon 20% Wool  
Hand stitched vegan label  
Size 180x33 cm



1234  
**ARBIN SCARF**

Made from a cotton and polyester blend, Arbin Scarf combines style and functionality with its checkered pattern and double-sided use. The hand stitched vegan label emphasizes quality and craftsmanship.

**DETAILS**

80% Polyester 20% Cotton  
Woven label and hand stitched vegan label  
Size 180x30 cm



C001 Black      C019 Camel      C048 Navy



C001 Black      C017 Brown      C048 Navy



1194  
**KORDEC**

Kordec Beanie offers a soft and refined feel with its cotton and cashmere blend. Detailed with nordbron hand stitched folded vegan label. Its single-fold band and half-polar lining provide comfort and style for everyday wear.

DETAILS



35% Cotton 35% Viscose 25% Polyamide 5%Cashmire  
Fleece Lining: 100% Polyester  
Hand stitched folded vegan label  
Regular Fit / One Size



C003 Dark Gray  
C018 Beige  
C019 Camel



0516  
**BENWI**

The elegantly shaped Benwi Beanie, crafted in a textured knit pattern, is exclusive to this quintessential nordbron product with its stylish, regular fit. It is detailed with a classic leather label.

DETAILS



35% Acrylic 35% Nylon 30% Wool  
Classic leather label  
Regular Fit / One Size



C002 Anthracite  
C004 Gray



C032 Brick Red  
C056 Golden Brown









1195

**BONHAM**

Bonham Beanie stands out with its geometric pattern and modern design. Its bandless and knitted lining structure provides a soft fit on the head. Featuring a hand stitched vegan label on the front with zigzag stitching and a hand stitched woven label on the back, this beanie combines style with sophistication.

**DETAILS**

53% Polyester 47% Viscose  
Lining: 53% Polyester 47% Viscose  
Hand stitched vegan label (front)  
Hand stitched woven label (back)  
Regular Fit / One Size

C001  
BlackC053  
Light GrayC061  
SulphurC079  
Skin GrayC120  
Moss GreenC164  
Ocean Blue

1111

**TUKERNA**

Tukerna beanie offers a sophisticated look with its elegant knit pattern and simple design. The geometric knit adds both warmth and a modern touch, making it stand out. Finished with hand stitched vegan label and a folded band, this beanie combines comfort and style, perfect for making a subtle statement in any setting.

**DETAILS**

50% Lambswool 25% Polyamide 25% Viscose  
Hand stitched vegan label  
Relaxed Fit / One Size

C001  
BlackC006  
CreamC017  
Brown



1085  
**SKYE**

Crafted with warmth and comfort in mind, Skye is a flat knit classic multiple ways to wear beanie. Perfect fit when worn with a broad cuff as in slim fit, or unrolled for a slouched look.

**DETAILS**

100% Acrylic  
Multiple ways to wear  
Folded woven label  
Slim Fit / One Size



C016 Choco  
C017 Brown



C043 Ice Blue  
C094 Blue



1183  
**RUBBEN**

Rubben is inspired to be ideal for urban commuting and weekend retreats. Pattern details providing a stylish look and feel. Rich plain knit design on meeting with a regular fit and stripes on folded end.

**DETAILS**

60% Acrylic 28% Polyester 12% Nylon  
Hand stitched folded leather label  
Regular Fit / One Size



C001 Black  
C003 Dark Gray  
C048 Navy









0403

## HOWAR

Designed to complement endless days of cold weather and laid-back living, crafted with lightweight finest quality. It is detailed with the nordbron hand stitched folded vegan label.

### DETAILS

100% Fine Acrylic  
Lining: 100% Cotton  
Hand stitched folded vegan label  
Loose Fit / One Size



C001  
Black

C004  
Gray

C048  
Navy



1158

## LARGAS

A simply urban inspired, knit pattern adorned throughout three stylish colors on relaxed fit body structure. Added nordbron hand stitched folded vegan label.

### DETAILS

72% Acrylic 25% Nylon 3% Spandex  
Fleece lining 100% Polyester  
Hand stitched folded vegan label  
Relaxed Fit / One Size



C001  
Black

C002  
Anthracite



C048  
Navy

C118  
Stone





1218

EMEY

Emey beanie has a stylish design with a single-layer cuff and hand-stitched details. Both the body and the cuff are hand stitched, and the leather label gives it a unique character. With its real leather label and regular fit, it is an elegant accessory that adapts to any occasion.

DETAILS

55% Acrylic 30% Nylon  
10% Wool 5% Mohair  
Leather Label  
Regular Fit/ One Size



C001  
Black

C017  
Brown

C032  
Brick Red



1109

MARTON

Marton Beanie features a creative design that combines two contrasting colors symmetrically. Its lambswool blend offers a soft and warm feel, while the non-polar structure keeps the beanie lightweight. With a single-fold band and raw canvas label, this slim-fit beanie sits snugly on the head, providing both comfort and style.

DETAILS

50% Lambswool 25% Polyamide 25% Viscose  
Woven label  
Slim Fit / One Size



C001  
Black

C006  
Cream

C017  
Brown

C049  
Indigo



1116

KIRUNA

Kiruna Beanie stands out with its elegant design and fine craftsmanship. The lambswool blend offers softness and warmth, while its non-polar construction and silicone label add a modern touch. With a single-fold band and slim fit design, this beanie provides a snug and stylish fit for everyday comfort.

DETAILS

50% Lambswool 25% Polyamide 25% Viscose  
Silicone label  
Slim Fit / One Size



C006  
Cream

C017  
Brown

C049  
Indigo

C056  
Golden Brown









1191

**DAVIS**

Davis Beanie is a beanie model that combines classic structure with modern details. The asymmetrical knit pattern is integrated with a ribbed fold-over band. The stripe detail on the beanie add a distinctive touch to the design. Detailed with nordbron hand stitched metal label.

**DETAILS**

50% Cotton 50% Acrylic  
Fleece lining 100% Polyester  
Hand stitched metal label  
Regular Fit / One Size



1120

**DABBS**

Dabbs Beanie stands out with its horizontal striped design and color transitions. Its cotton structure provides softness, while the double-folded band and non-polar model offer comfort. With woven label and regular fit, this beanie offers both style and comfort for everyday use, seamlessly blending with your outfits.

**DETAILS**

50% Cotton 50% Acrylic  
Woven label  
Regular Fit / One Size

C001  
BlackC018  
BeigeC002  
AnthraciteC058  
OliveC032  
Brick RedC051  
ArmyC093  
CobaltC094  
Blue



0425

**ALLEK**

Designed in mind for adding panache to mens street style, rib-knit structured is a classic winter warmer in a two colorway chromatic hues. This beanie is detailed with hand stitched folded vegan label.

**DETAILS**

70% Acrylic 15% Wool 15% Polyamide  
Hand stitched folded vegan label  
Regular Fit / One Size



C017  
Brown

C076  
Navy Skull

C142  
Orange



1188

**TAUSE**

Tause beanie stands out with its modern asymmetrical design and sleek look. With its lightweight, non-polar construction, folded woven label and single-fold band, it offers a comfortable and stylish fit. This beanie is designed to complement your daily style with a unique touch.

**DETAILS**

53% Polyester 47% Viscose  
Folded woven label  
Regular Fit / One Size



C001  
Black

C002  
Anthracite



C014  
Olive Gray

C032  
Brick Red









1113

**HILFIT**

Hilfit beanie features a bold zigzag pattern in a stylish design. It's single-fold band ensures a comfortable fit, while embroidered details add a dynamic touch. Finished with hand stitched vegan label, the beanie offers both style and an eco-friendly choice.

**DETAILS**

53% Polyester 47% Viscose  
Hand stitched vegan label  
Regular Fit / One Size



1118

**PEGAS**

Pegas beanie stands out with its modern and dynamic design. The geometric triangle patterns combine with contrasting colors to create a unique look. Its single-fold band ensures a comfortable fit, while hand stitched vegan label patch completes this beanie, making it ideal for those seeking both comfort and style in everyday wear.

**DETAILS**

53% Polyester 47% Viscose  
Hand stitched vegan label  
Regular Fit / One Size



C029  
Coral

C051  
Army



C001  
Black

C051  
Army



C053  
Light Gray

C061  
Sulphur



C061  
Sulphur

C164  
Ocean Blue



1211

**BROPHY**

Brophy beanie stands out with its bold lines and modern design. It's single-fold band and knit lining ensure a comfortable fit, while the six-panel construction adds a classic touch. The colorful stripe details bring a dynamic style to this beanie, and with its silicone label and relaxed fit, it provides all-day comfort.

**DETAILS**

53% Polyester 47% Viscose  
Silicone label  
Relaxed Fit / One Size



C001  
Black

C006  
Cream



C081  
Umbra Gray

C164  
Ocean Blue



1214

**PUZO SCARF**

Puzo Scarf stands out with its asymmetrical pattern and vibrant, multi-colored design, perfectly complementing the Brophy Beanie. Its silicone label and double-sided use offer both style and practicality. With its bold colors and modern touches, this scarf adds movement and elegance to any outfit.

**DETAILS**

53% Polyester 47% Viscose  
Silicone label  
Size 200x30 cm



C001  
Black

C061  
Sulphur



C081  
Umbra Gray

C164  
Ocean Blue







# BAG

---

Nordbron bags distinguish themselves through a harmonious blend of functionality and style, catering effortlessly to the demands of both urban landscapes and outdoor escapades. Meticulously crafted for durability and refined with an eye for detail, each design unites practicality with understated elegance. Drawing on heritage while embracing contemporary needs, nordbron bags capture the essence of timeless sophistication, offering versatility without compromise.



8208

STARK

Featuring a clean design and casual fit, the rounded top Stark backpack is elegantly rendered from a qualified artificial leather. Refining an iconic style with subtle nordbon details, this hooded silhouette gives an additional down pocket, making it easily attractive for everyday journeys.

DETAILS



Body: 100% PU (Polyurethane)  
Lining: 100% Polyester  
Width: 38 cm - Height: 44 cm  
Inner depth: 16 cm  
Volume: 26L  
Weight: 1300 gr.



C001  
Black



C002  
Anthracite



C018  
Beige



C048  
Navy







8205

KRAMFORS

Well equipped for school and work essentials, the nordbron Kramfors backpack is designed with a strong and basicly styled outer fabric, included versatile range of storage pockets and organizers.

DETAILS

Body: 100% Nylon  
Lining: 100% Polyester  
Width: 30.5 cm - Height: 41 cm  
Inner depth: 13 cm  
Volume: 16 L  
Weight: 900 gr.



C001  
Black

C182  
Khaki



8209

HASLE

Hasle Tote Bag features a stylish design that transitions from double handles to a single strap. Metal rivets and an internal leather pocket enhance functionality, while the dedicated phone compartment ensures easy access. The metal-tipped Paris hook securely holds your keys. This bag is your constant companion during daily hustle and bustle.

DETAILS

Body: 100% PU (Polyurethane)  
Lining: 100% Polyester  
Width: 36 cm - Height: 39 cm  
Inner depth: 3 cm  
Volume: 5.76 L  
Weight: 395 gr.



C018  
Beige

C019  
Camel

C048  
Navy



8206

LUCERNE

Crafted for everyday exploration, the Lucerne backpack features a hidden drawcord pocket cinch closure and additional storage with distinctive strap details. Equipped with compact main compartments, external water bottle pockets and interior slots.



8210

LUCERNE MINI

Designed for urban adventures, the nordbron Lucerne mini-volume backpack features dual top carrying handles, convenient external water bottle pockets and slender shoulder straps.

DETAILS

Body: 100% Polyester  
Lining: 100% Polyester  
Width: 28 cm - Height: 40 cm  
Inner depth: 11 cm  
Volume: 12 L  
Weight: 1000 gr.



C001  
Black



C017  
Brown



C049  
Indigo



C070  
Purple



C187  
Mustard



C188  
Gray

DETAILS

Body: 100% Polyester  
Lining: 100% Polyester  
Width: 21.5 cm - Height: 29 cm  
Inner depth: 9 cm  
Volume: 7 L  
Weight: 560 gr.



C001  
Black



C017  
Brown



C049  
Indigo



C070  
Purple



C187  
Mustard



C188  
Gray



8207

SOLNA

A popular mountaineering silhouette, the Solna backpack elevates an iconic style with modern functionality. Its design-driven inner is complemented by higher volume storage and signature nordbron brand detailing.

DETAILS



Body: 100% PU (Polyurethane)  
Lining: 100% Polyester  
Width: 31 cm - Height: 44 cm  
Inner depth: 13 cm  
Volume: 17 L  
Weight: 900 gr.



C001  
Black



C010  
Green



C013  
Laurel Green



C017  
Brown



C048  
Navy











POS 013

**BANNER**

50 x 160 cm



POS 005

**TABLE LOGO**

15 x 8 cm



POS 004

**IMAGE HOLDER**

20 x 4,5 x 4,5 cm



POS 010

**IMAGE HOLDER**

38 x 38 cm



POS 011

**WOODEN BOX**

18,5 x 30 x 11,5 cm



POS 027

**CARDBOARD**

20 x 30 cm



POS 003

**MIRROR**

30 x 45 cm



POS 011

**SHOPPING BAG**



POS 016

**SALES DISPLAY**

30 x 70 x 150 cm



POS 020

**METAL HATSHAPE**

20 x 15 x 35 cm



POS 019

**METAL HOLDER**

POS 017

**HATSHAPES**

## ADULT INDEX

(WITH PRODUCT NAME)

Style	Code	Page	Style	Code	Page
Aaley	1206	25	Rigi	1216	45
Allek	0425	82	Ronja	1622	25
Arbin Scarf	1234	69	Rubben	1183	74
Askai	1220	61	Ruqy	1210	29
Baxle	1199	22	Saxa	4226	14
Belluno	4242	17	Setoon Scarf	1202	50
Benwi	0516	70	Skye	1085	74
Blomst	1236	53	Solna	8207	94
Bondez	1226	65	Stark	8208	90
Bonham	1195	73	Tause	1188	82
Brophy	1211	86	Tonal Animal Woven Scarf	1806	53
Calasi	1213	25	Tukerna	1111	73
Cambria	1212	46	Viola	3213	22
Capra Scarf	1144	49	Viseu	4243	17
Casto	0418	66	Wainy	3210	33
Cherly	1533	38	Wayla Scarf	1235	45
Cherly Scarf	1190	38	Wilmot	1169	58
Clarissa	3165	34	Zunhi	1204	14
Coopley	1207	30			
Cuat	1114	13			
Dabbs	1120	81			
Davis	1191	81			
Emey	1218	78			
Erle	1238	54			
Ethner	1208	37			
Felony	3218	33			
Giada	3174	49			
Gleny	4037	10			
Goney	1168	66			
Grace	3172	41			
Hasle	8209	96			
Hilfit	1113	85			
Howar	0403	77			
Jebba	2106	13			
Jenson	1189	9			
Jucki	1205	54			
Kiruna	1116	78			
Kordec	1194	70			
Korg	3313	42			
Kramfors	8205	96			
Largas	1158	77			
Lexmu	1222	65			
Leymond	0510	58			
Linje	1217	34			
Loes Scarf	1192	69			
Lorena	3212	46			
Lucerne	8206	95			
Lucerne Mini	8210	95			
Mali	4200	14			
Marton	1109	78			
Microfleece Uni	5501	18			
Miley	3201	30			
Moena	4241	17			
Nali	1225	62			
Niwul Scarf	1121	41			
Nolly	3208	50			
Norgad Scarf	1237	42			
Oklom	1219	61			
Pacot	1200	37			
Pegas	1118	85			
Perf	1112	29			
Posie	2105	10			
Pumb	1103	9			
Puzo Scarf	1214	86			
Qetri	1227	62			
Raine	1636	26			
Raine Scarf	1637	26			
Rhine	1119	37			







**THANK**

**YOU**



  
nordbron