

A full-length photograph of a woman with long dark hair, wearing a blue long-sleeved gown with a deep V-neckline and a full skirt. She is standing in a studio with a light-colored wall and floor. To the left, a dark vertical structure and a wooden chest of drawers are partially visible. The image is framed by white L-shaped lines at the corners and center, resembling a camera's viewfinder. The brand name 'LALINE' is centered in a large, bold, black serif font.

LALINE

SS26 CAMERA CATALOGUE PHOTO REC

LALINE



The collection "Whispers of Petals" masterfully balances femininity and strength with a refined sense of sophistication. Featuring exquisite craftsmanship and a 'couture touch,' each piece is adorned with handcrafted floral appliqués and intricate embroideries, showcasing the brand's dedication to detail. Floral patterns and captivating colors are used not to evoke romance, but to exude a powerful, charismatic allure.

LALINE

SS 26

D e b u t C o l l e c t i o n













LALINE

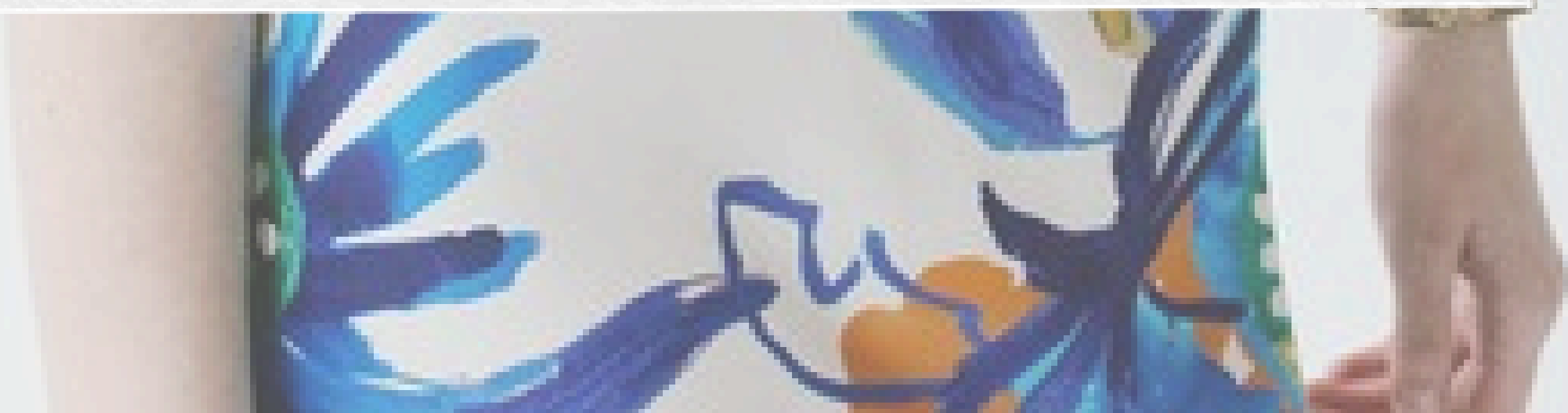


Designed to adapt to various occasions, the collection is complemented by versatile styling accessories, catering to the dynamic lifestyle of the modern woman. Minimalist yet sophisticated designs emphasize confidence, while flowing fabrics and delicate details create a timeless aesthetic.

Elegance Reborn



LALINE





LALINE




Laline empowers women by redefining classic elegance with a modern twist. We create occasion wear that inspires confidence, celebrating individuality and strength. Each piece invites women to embrace their unique journey with grace and poise.





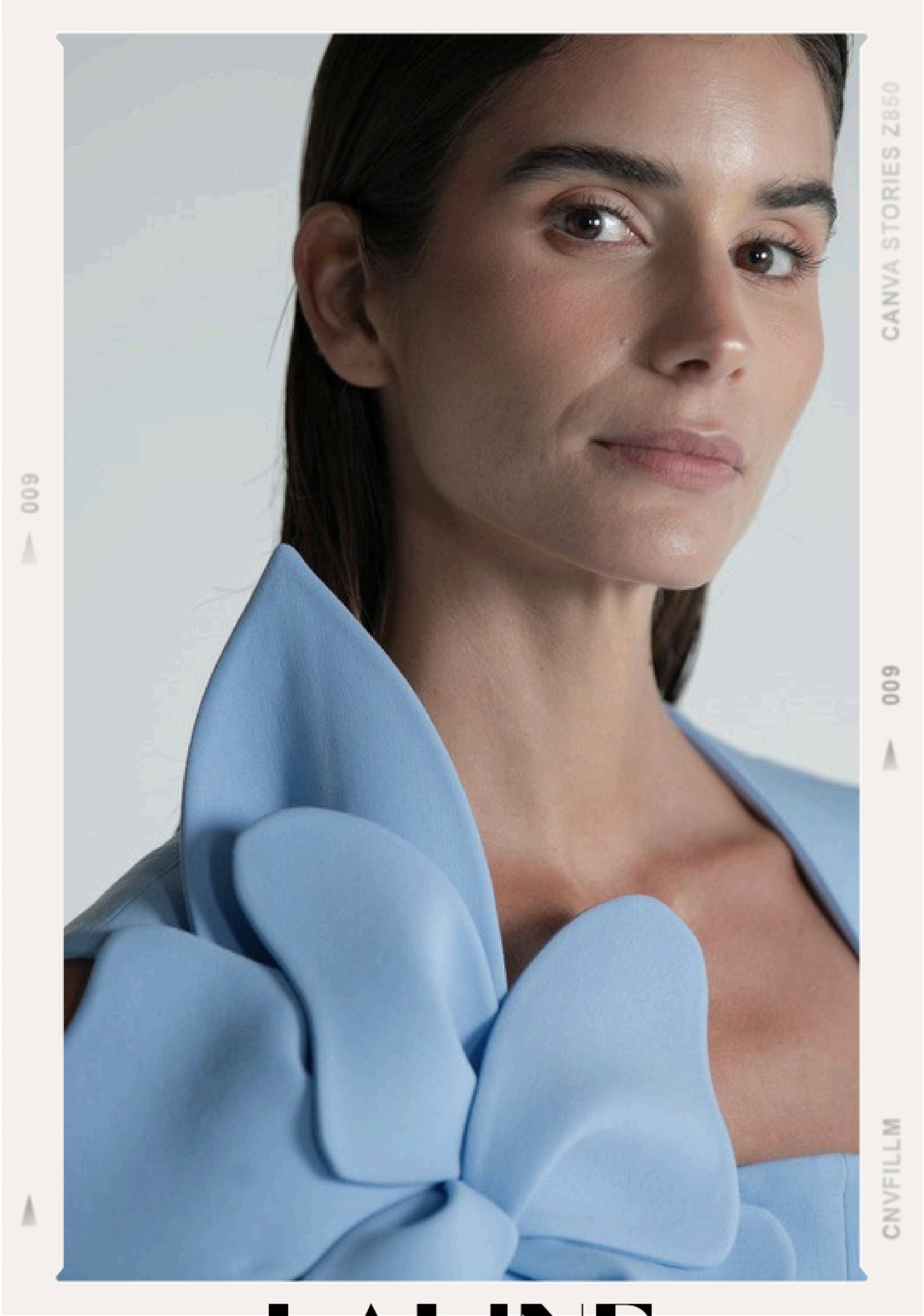




A full-length photograph of a woman with long brown hair, wearing a light blue, sleeveless, floor-length gown with a deep V-neckline and a draped detail across the bodice. She is also wearing large, square, light-colored earrings. The word "LALINE" is superimposed in large, bold, black capital letters across the middle of the image.

LALINE





LALINE









LALINE

















LALINE





LALINE











LALINE







EXP 24

25221 LALINE 34455

ISO 400



FRAME 12

SHUTTER 1/60

APERTURE: F/2.0



LALINE





























LALINE













